

ECOFIT offers a complete selection of fan solutions for railway applications as well as customised air movement products based on customer's specifications and requirements.

ECOFIT centrifugal fans are available with forward wheels (120 up to 180mm), single and double inlet, and with backward wheels (180 up to 250mm).

ECOFIT railway fans solutions feature:

- Optimal airflow
- Wide power range up to 300W
- Low maintenance
- Low noise levels
- Wide range of operating voltages including:
 - Single or three phases 120/230V 50Hz
 - Three phases 230/400/480V 50/60Hz
 - DC 24/48/72/110VDC
- Maximum efficiency
- Speed controllability
- Compact assemblies
- Smooth operation

ECOFIT was established in 1976 to design, manufacture and sell induction motors and fans. In 1981 the company decides to extend its range with the addition of external rotor motors and fans, a concept that formed the basis for 30 years of growth and success.

Certified ISO 9002 in 1993, **ECOFIT**'s quality system is now certified ISO 9001 : 2015 .

Since 1994, **ECOFIT** has been part of the ROSENBERG group.

In March 2002, **ECOFIT** acquires **ETRI**, leading manufacturer of compact and industrial fans and blowers. In 2007, **ECOFIT** extends its range with a 230 VAC motor with electronic commutation (EC technology) and energy saving fans.



ECOFIT & **ETRI** PRODUCTS

ZI SUD - RUE MARC SEGUIN - B.P. 60008

F-41100 VENDÔME

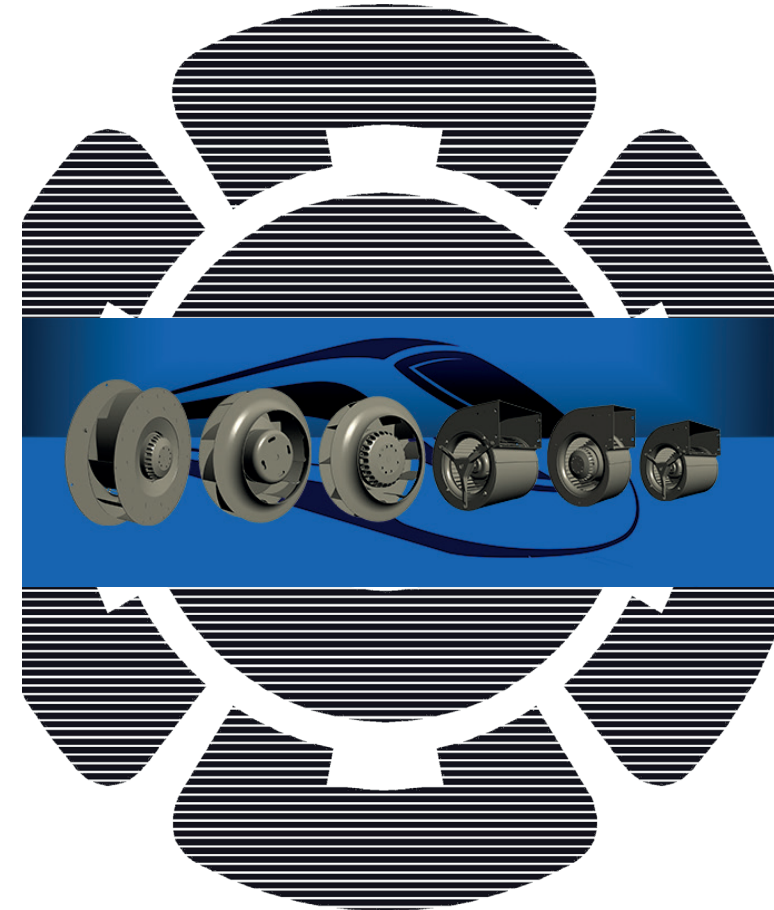
+33 (0)2 54 23 14 54

info@etrinet.com

www.etrinet.com

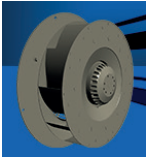


ECOFIT & **ETRI** PRODUCTS



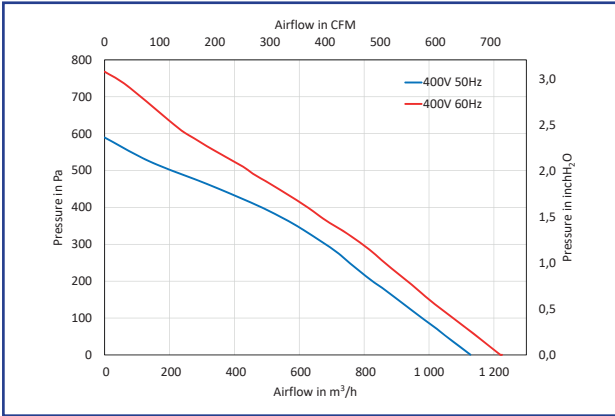
FANS FOR RAILWAY





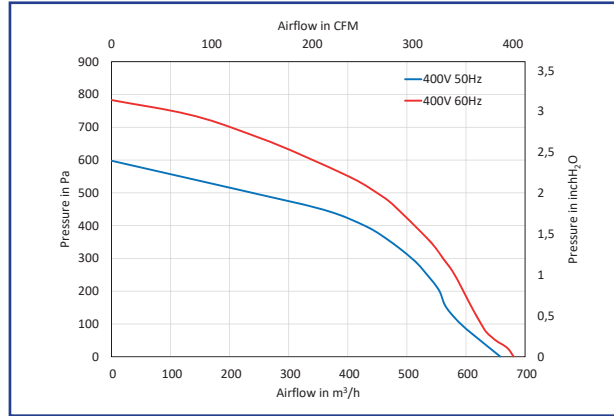
2RREt45 250x56R (Inv) CENTRIFUGAL AC BACKWARDS FAN

- Motor type: AC THREE PHASES
- Voltage: 400VDC
- Power: 156 - 203Wa
- Current: 0,34 - 0,36A
- Max operating T°: -20 C°/+70 C°
- IP55



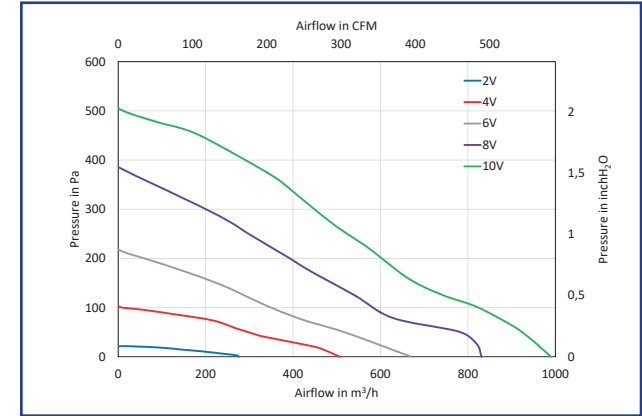
2GREt45 160x62R SINGLE INLET CENTRIFUGAL FAN

- Motor type: AC THREE PHASES
- Voltage: 230VAC
- Power: 224 - 300Wa
- Current: 0,69 - 0,83A
- Max operating T°: -20 C°/+70 C°
- IP54



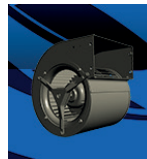
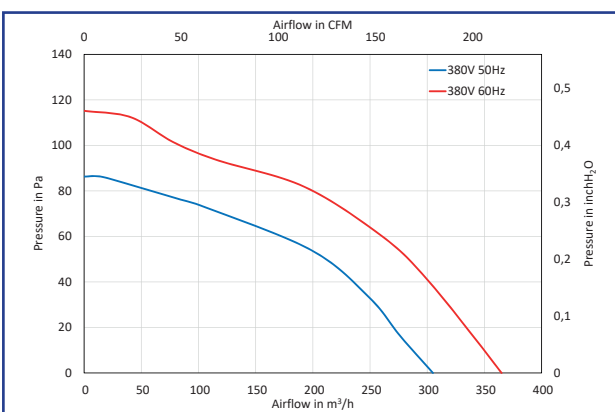
GDS72 133x190L DOUBLE INLET CENTRIFUGAL FAN

- Motor type: DC
- Voltage: 72VDC
- Power: 117Wa
- Current: 1,63A
- Max operating T°: -40 C°/+55 C°
- IP54



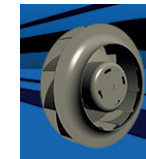
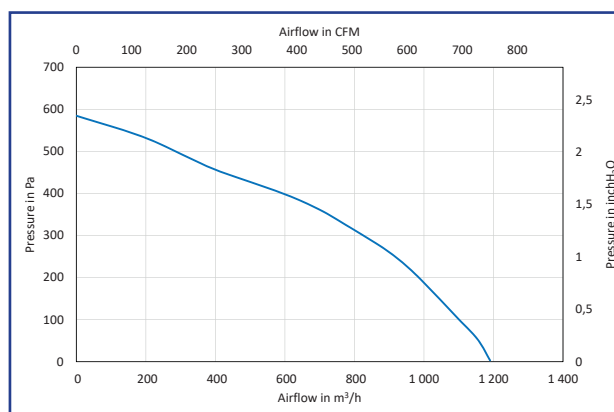
4RREt15 180x32R CENTRIFUGAL AC BACKWARDS FAN

- Motor type: AC THREE PHASES
- Voltage: 345, 380,440VAC
- Power: 31 - 46Wa
- Current: 0,08 - 0,12A
- Max operating T°: -40 C°/+50 C°
- IP55



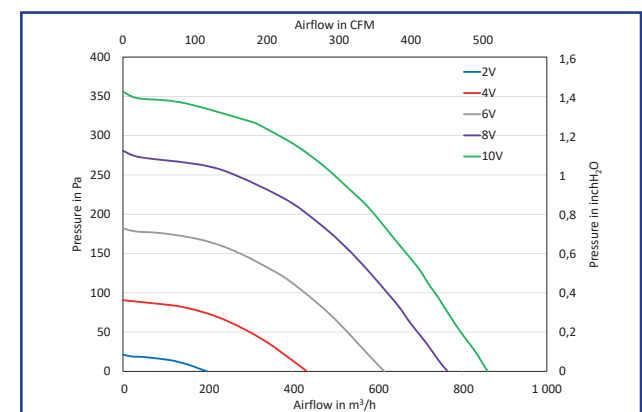
2GDFt65 160x160L DOUBLE INLET CENTRIFUGAL FAN

- Motor type: AC THREE PHASES
- Voltage: 320, 400VAC
- Power: 304 - 251Wa
- Current: 0,49 - 0,50A
- Max operating T°: -40 C°/+60 C°
- IP55



RRE110 225x40R CENTRIFUGAL DC BACKWARDS FAN

- Motor type: DC
- Voltage: 110VDC
- Power: 64Wa
- Current: 0,58A
- Max operating T°: -40 C°/+50 C°
- IP55



Non contractual document. All data mentioned on this page are subject to change without prior notice. Picture for information only.